

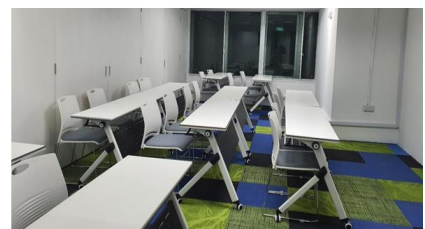
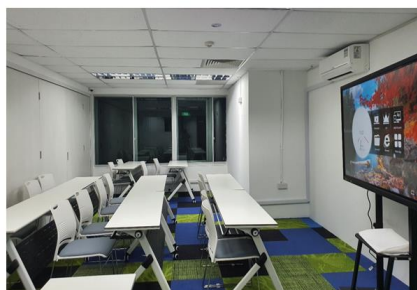
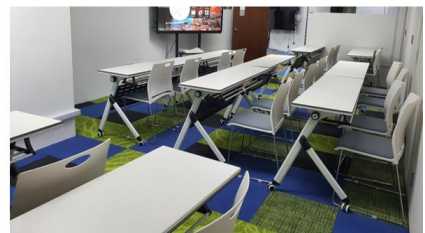


## OUR SCHOOL PREMISES

We take pride in our commitment to providing a cutting-edge learning environment, and a key aspect of this commitment is the incorporation of advanced Smart Boards in **each of our eight fully equipped classrooms**. These **Smart Boards** represent a state-of-the-art teaching tool that goes beyond traditional methods.

Premises	Floor area (in m <sup>2</sup> )	Maximum capacity
Classroom 1	32.4	21
Classroom 2	29	19
Classroom 3	45.3	30
Classroom 4	33	22
Classroom 5	33	22
Classroom 6	31.3	20
Classroom 7	27.6	18
Classroom 8 / Computer Room	33.7	22
Meeting Room/ Discussion Room	17.5	11
Resource Library and Integrate Engineering Lab	38.8	25

All of classroom space is 1.5 square metres for every student.



Our **Smart Boards** are interactive multimedia displays that empower educators to deliver dynamic and engaging lessons. With touch-sensitive screens and interactive capabilities, instructors can seamlessly integrate digital content, multimedia resources, and real-time collaboration into their teaching methodologies. This not only fosters a more interactive and participatory learning experience but also caters to diverse learning styles, making the educational process more inclusive.



The Smart Boards also enhance visual learning by allowing the display of 3D models, diagrams, and dynamic simulations, bringing complex concepts to life. Teachers can annotate, highlight, and manipulate content directly on the board, fostering a more hands-on and immersive learning experience for students.

Furthermore, the **Smart Boards are equipped with wireless connectivity, enabling seamless integration with other devices.** This feature facilitates real-time sharing of content, enabling collaborative learning and ensuring that students stay connected and engaged throughout the educational sessions.

In essence, our Smart Boards represent a significant investment in modern pedagogy, empowering both educators and students with innovative tools that elevate the overall learning experience. We believe in harnessing technology to create a stimulating and interactive educational environment that prepares students for the challenges of the future.

In addition to the Smart Boards, our facilities include **a dedicated meeting/discussion room** and a **computer room**, all equipped with **high-speed WIFI connectivity**. Our resource library, featuring computers, and the integrated engineering lab also ensure students have access to a wealth of digital resources.

Moreover, recognising the importance of security, we provide dedicated rooms for safeguarding examination papers and important documents. This commitment to both advanced technology and secure document management reflects our dedication to providing a comprehensive and forward-thinking educational environment.

Moreover, our commitment to versatility is embodied in the flexible design of our classrooms. Each space is thoughtfully crafted to adapt to various needs, seamlessly transforming into either an expansive lecture hall or a dynamic event space.

**Classroom 1 and 2, designed for more intimate gatherings, can comfortably accommodate up to 40 individuals each.** These spaces are ideal for **workshops, small seminars, or collaborative sessions**, providing an intimate setting for focused interactions.

In addition to our classrooms, we understand the importance of providing **dedicated areas for students to rest and engage in discussions.** Throughout our facility, you'll find inviting **spaces designed for relaxation and informal conversations.** These areas are equipped with comfortable seating and conducive environments, allowing students to unwind, recharge, and foster meaningful discussions outside the traditional classroom setting.

Furthermore, the larger event spaces in **Classroom 3, 4, 5, and 6 are designed to host more extensive gatherings with a maximum capacity of 94 attendees.** These spaces are well-suited for **conferences, presentations, and larger-scale events, offering a spacious and well-equipped environment for a diverse range of activities.**

Whether it's fostering small group discussions, providing spaces for relaxation, or hosting larger-scale events, our adaptable classrooms and dedicated areas ensure that the learning environment can be tailored to meet the specific requirements of any educational or professional occasion. This





**G S T M**  
Global School of Technology & Management

ENDLESS EDUCATION, INFINITE OPPORTUNITIES

flexibility not only enhances the overall functionality of our facilities but also underscores our commitment to providing a dynamic and accommodating space for a variety of educational experiences.



**Hotline:** +65 64239580/ 9590  
**Email:** [info@gstm.edu.sg](mailto:info@gstm.edu.sg)  
**Website:** [www.gstm.edu.sg](http://www.gstm.edu.sg)

**Address:**  
105 Cecil St, #21-01  
The Octagon, Singapore 069534





**G S T M**  
Global School of Technology & Management

ENDLESS EDUCATION, INFINITE OPPORTUNITIES



**Hotline:** +65 64239580/ 9590  
**Email:** [info@gstm.edu.sg](mailto:info@gstm.edu.sg)  
**Website:** [www.gstm.edu.sg](http://www.gstm.edu.sg)

**Address:**  
105 Cecil St, #21-01  
The Octagon, Singapore 069534





**G S T M**  
Global School of Technology & Management

ENDLESS EDUCATION, INFINITE OPPORTUNITIES



**Hotline:** +65 64239580/ 9590  
**Email:** [info@gstm.edu.sg](mailto:info@gstm.edu.sg)  
**Website:** [www.gstm.edu.sg](http://www.gstm.edu.sg)

**Address:**  
105 Cecil St, #21-01  
The Octagon, Singapore 069534



**G S T M**  
Global School of Technology & Management

ENDLESS EDUCATION, INFINITE OPPORTUNITIES



**Hotline:** +65 64239580/ 9590  
**Email:** [info@gstm.edu.sg](mailto:info@gstm.edu.sg)  
**Website:** [www.gstm.edu.sg](http://www.gstm.edu.sg)

**Address:**  
105 Cecil St, #21-01  
The Octagon, Singapore 069534